

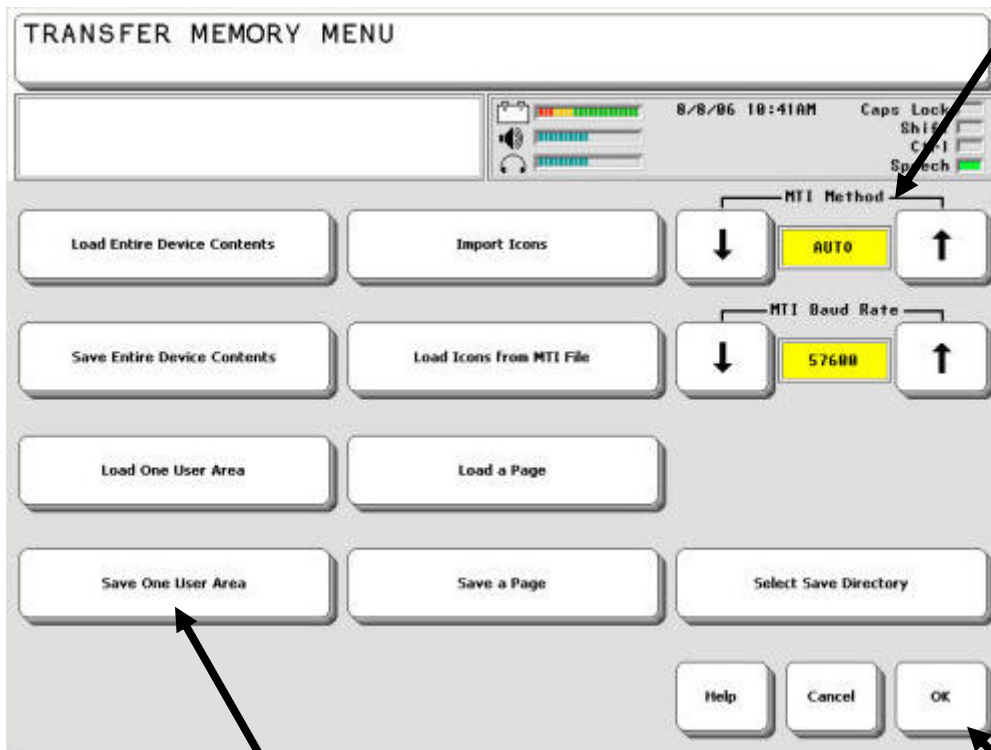
"IMPORTANT: Please follow the attached instructions to save the device user's vocabulary prior to taking the class."

Transferring Memory Using an USB Flash Drive.

USB Transfer



1. Connect the USB memory device to the **rectangular** USB port on the side of the device.
2. Go to the **TOOLBOX** and open the **TRANSFER MEMORY MENU**.
3. Be sure the **MTI Method** reads **AUTO** or **USB Disk**. If the USB device is securely in place, you will see a note telling you **Disk Status: READY** and the amount of space available on the card. **NOTE: It may take a few seconds** for the option name to change in the box after you select an up or down arrow



4. Select **Save One User Area**. Type in the name for the file and select **OK**.
5. When the transfer is done you will see the message **Memory Transfer Complete** on the display. Select **OK**.